

3rd Online quiz by Illuminous –
The Medical Quiz society,
Students' section,
Medical Education Unit,
UCMS and GTB Hospital, Delhi

Report

Illuminous had conducted the third quiz of the fortnightly series of online intercollege quizzes titled "Does your Gray matter?"

It was a 15-minute quiz held on 18/06/2020 at 9:00pm via Google forms. We had over 80 participants from colleges across the country from different batches. The batch distribution of the participants has also been attached with this mail.

Most of the questions were mostly clinical cases, trivia and connects. The maximum marks that could be scored was 15. Some of the questions have been attached with this mail. The answers to the questions was shared with the participants in a PDF format on the WhatsApp groups created for that purpose.

Scoring was done manually. The scores were added with those of the previous quizzes of the series and the bonus questions uploaded on Instagram. The names of the top 3 scorers were announced on the WhatsApp groups. The highest scorer was a final year student from University College of Medical Sciences with a total combined score of 71.5. She would be awarded an online question bank.

The quiz was organised by:

Aneeket Modak (2nd semester)
Baqar Riyaz(2nd semester)
Bhavya Pahwa (2nd semester)
Kumar Adarsh (2nd semester)
Pragya Mitra (2nd semester)
Shantanu Kushwaha (2nd semester)
Chetna Dengri (intern)

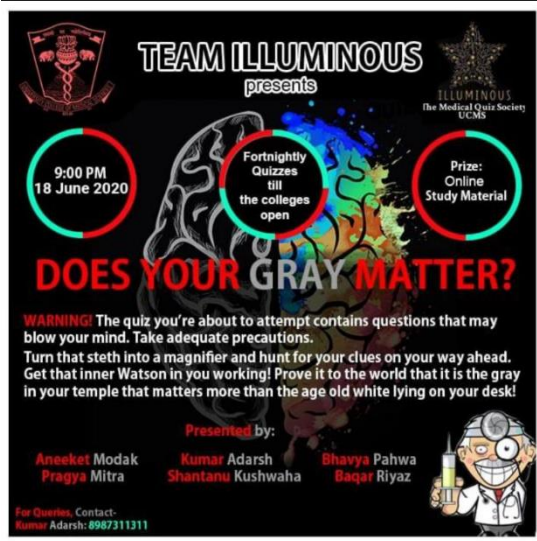
The entire series went down smoothly and were found to be highly educative by the participants.

Report prepared by:

Pragya Mitra
First year medical student
UCMS and GTBH, Delhi

Dr Amir Maroof Khan
Coordinator,
MEU, UCMS and GTB Hospital,
Delhi

Glimpses



Does Your Gray Matter (Quiz 3.0)?

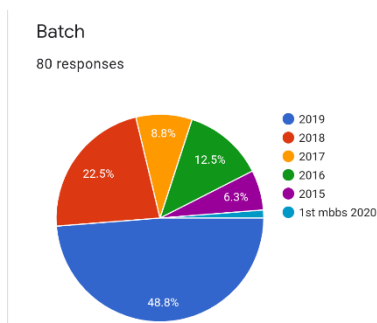


The Quiz Questions!

Q1. The symptoms of x 2 points
disappear after a particular age. Although the lump may or may not remain. The main cause is the inflammation of a bony prominence which may cause inflammation of tendons too. Identify X and name the area whose inflammation causes X.



Your answer



Q8. This character from a popular medical drama suffers from a disease due to atrophy of X. Name x. 1 point

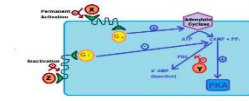


Your answer

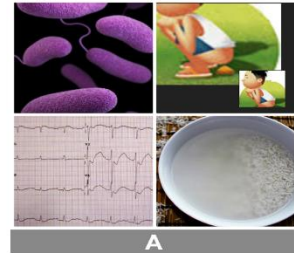
Q3. A famous cathedral, which in recent years became quite famous due to an accident, had these grotesque looking creatures called "A". These creatures have an association with a disease called "X". And, there is a very famous novel "B", which bears the same name as that of the cathedral. It's set in medieval ages and is essentially a depressing tragic story. The protagonist had an abnormality described in the title itself ; an abnormal vertebral column. The abnormality is a characteristic finding in disease "Y", having juvenile onset around the pre-pubertal age. Name : A, X, B, and Y. 4 points



Q5. Match X,Y,Z with A,B,C given below

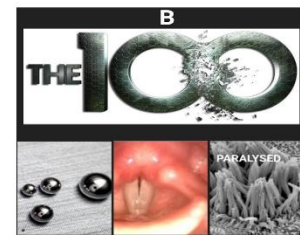


Q5 contd. This is picture A. Match it with X,Y,Z given above. 1 point



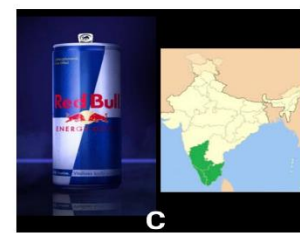
- x
- y
- z

Q5 contd. This is picture B. Match it with X,Y,Z given above. 1 point



- x
- y
- z

Q5 contd. This is picture C. Match it with X,Y,Z given above. 1 point



- x
- y
- z